



gaelscoil bhaile brigín

NUACHTLITIR 1

28/08/2025

Ba mhaith liom ar dtús fáilte Uí Cheallaigh a chur roimh gach duine ar ais ar scoil. Bhíomar ar bís na daltaí ar fad a fheiceáil arís théis an tsamhraidh! Níl cead páirceáil ar an áit 'set down' ar thaobh na scoile ar chor ar bith, taobh Bracken san áireamh. Tá trí scoil ar an gcampas agus caithfimid meas a thabhairt ar na scoileanna eile chomh maith. Tá easpa áiteanna páirceála ar shuíomh na scoile, mar sin molaimid daoibh páirceáil i gcarrchlós an tséipéil agus siúl suas.

Meabhrú freisin cloí le rialacha an bhóthair agus gan pairceáil ar na línte buí dúbailte taobh amuigh de gheataí na scoile.

I would like to take this opportunity to welcome everyone back to school. We were delighted to see our wonderful students coming back to school after the summer break. There is no parking allowed in the set down area on the school side at any time. This includes outside Gaelscoil Bhaile Brigín, Bracken Educate Together & in between. There are 3 schools on the campus and we need to be aware of this and respect the start times of the other schools too. Please ensure that your child is not on the school grounds before then. There is very little parking on the school campus, therefore, we would encourage you to park in the church car park and walk to the school.

Reminder also to adhere to the rules of the road and not to park on the double yellow lines outside the school gates.

Sonraí Teagmhála/ Contact Details

Má tá aon athrú ar shonraí teagmhála tá sé rí-thábhachtach an scoil a chur ar an eolas faoi. I gcás práinne caithfimid bheith in ann dul i dteagmháil libh. Is féidir leat é seo a dhéanamh ar Aladdin. Tabhair faoi deara nach féidir le tuismitheoirí ach amháin a gcuid eolais féin & sonraí loco parentis a fheiceáil. Mar shampla ní féidir le Mam eolas Daid a fheiceáil agus a mhalairt. Seo de bharr chúrsaí príobháideachais. Tá an t-eolas ar an gcóras agus is féidir linn é a fheiceáil. Mar sin, iarraimis oraibh gan tuismitheoir a chur mar teagmhálaí éigeandála.

If there is any change in your contact details it is of the utmost importance that you inform the school. Contact details are needed in case of emergencies. This can be now be done on Aladdin. Please note that parents can only see their own information & the information of the loco parentis. For example, Mam cannot see Dad's information and vice versa. This is due to privacy. The information for both parents is on the system, however and can be seen by us. Therefore, we would ask that you do not change the emergency contact details to include another parent.

Lóin Folláin/ Healthy Lunches

Ba mhaith linn cur i gcuimhne de ghach tuismitheoir faoi pholasaí na scoile maidir leis an lón. Tá cóip de ar shuíomh na scoile & sampla thíos. Tá leabhrán eolais faoi chonas lón folláin a ullmhú ceangailte leis an nuachtlitir chomh maith.

We would like to remind all parents of our healthy eating policy. A copy is available on the school website & a section is below. A leaflet on how to prepare healthy lunches is also attached with this newsletter.

Food which can be part of lunch:

All healthy foods are encouraged for lunch e.g. sandwiches, fruit, yoghurts, crackers (tuc crackers are allowed), vegetables etc.

Popcorn is allowed, home baking is allowed e.g. scones/fruit scones/breads/ flapjacks (without chocolate), - however no desserts e.g. cakes/pies/tarts etc.

Drinks: milk/water/fruit juices

Not allowed:

There is a ban on any chocolate product – this includes chocolate milks, yoghurts, spreads, cereal bars with chocolate etc.

All sweets are not allowed – including fruit winders. No biscuits are allowed – this is to include digestives, rich tea etc.

Cereal bars are not allowed, No crisps are allowed.

Drinks: fizzy drinks and prime/monster/powerade/lucazade drinks are not allowed.



Cúrsaí Poncúlachta/Tinrimh/Attendance and Punctuality:

Ba mhaith liom a chur i gcuimhne do gach duine go bhfuil dualgas reathúil ar pháistí freastal ar scoil. Níor choir páistí a choinneáil sa bhaile ón scoil ach amháin má tá siad tinn. Sa chás go bhfuil do pháiste tinn, is gá scéal a chur chuig an scoil, trí ghlaoch ar scoil, rphost a chur chuig an múinteoir nó nóta a chur ar Aladdin nó litir ag tabhairt cúis na hasláithreachta. Tá dualgas ar an scoil tuairisciú chuig TUSLA nuair a chailleann aon pháiste níos mó ná 20 lá. Bíonn míniú le tabhairt chucu chomh maith ar chúiseanna na n-asláithreachtaí.

Tá sé tábhachtach chomh maith go mbíonn do pháiste ar scoil in am.

Tosaíonn an scoil ag 8.50 ar maidin. Ba chóir go mbeadh do pháiste sa líne ag an am sin (NB NÍ FÉIDIR LE PÁISTÍ A BHEITH AR SHUÍOMH NA SCOILE ROIMH 8.45). Má bhíonn páistí déanach ar bhonn leanúnach msh ag teacht isteach ag 9.10 gach maidin sin beagnach 2 uair a chloig de scolaíocht cailte acu gach seachtain. Ar maidin, clúdaítear go leor gnéithe tábhachtacha ó litearthacht, ceartú an obair bhaile, spraoi struchtúrtha agus go leor eile. Chomh maith leis sin, tá sé tábhachtach go dtuigeann páistí an tábhacht le poncúlacht don todhchaí, is deis é seo dóibh anois dea-nósanna a chothú a sheasfaidh dóibh don chuid eile dá saoil.

I would like to remind everyone that there is a legal responsibility to ensure that children attend school regularly. Children should only be kept at home if they are sick but should return when they are better. If your child is sick and is unable to attend school, you must inform the school by phone and by letter/ e-mail. Please ensure that there is a reason given for the absence. The school has a legal obligation to inform TUSLA- Child and Family Agency when a child misses more than 20 days school. We also have to provide an explanation for those absences.

It is also extremely important to ensure that your child is on time for school. School begins at 8.50am. Your child should be in his/her line at that time. (NB NOBODY IS ALLOWED ON SCHOOL PREMISES BEFORE 8.45 – THEY WILL NOT BE COVERED BY INSURANCE). If a child is late regularly, eg arrives at 9.10, that would mean that he/she has missed nearly 2 hours of school a week. Lots of important areas of the curriculum are covered in the morning, ranging from literacy, to structured play to correction of homework. Punctuality is also an important life skill which your child will need to learn for the future. This is an opportunity to instil this skill in them from an early age.

If your child is late, he/she must sign in in the office and if you are collecting your child early you must sign them out at the office. No parent may go further than reception. Please notify via Aladdin in advance of arriving.

Rothair srl/ Bikes etc

Tabhair faoi deara nach bhfuil cead ag aon duine rothair, scútar nó bugaithe a fhágáil lastigh den scoil. Tá áit ann taobh amuigh do na rothair & scútar. Is gá duit iad a chur faoi glas anseo.

Please note that bikes, scooters, buggies etc cannot be left inside the school for the day. There is a designated bike rack outside for these items. Please ensure that you lock your belongings as the school cannot be held responsible for any items stolen.

Billí Scoile/ School Bills

D' iarrfaimis oraibh iad seo a íoc roimh dheireadh mhí Mheán Fómhair. Tá na sonraí ar na leabharliostaí. Is féidir íocaíochtaí a dhéanamh ar Aladdin amháin. Rachaidh iarratas abhaile an tseachtain seo. Mura bhfuil fáil agat ar an aip, is féidir dul chuig suíomh idirlín na scoile agus íoc anseo. Mura féidir leat íoc faoi láthair de bharr chúrsaí airgeadais, déan teagmháil linn le socrú eile a dhéanamh. Má tá deacrachtaí agat le Aladdin, cuir scéal chuig Kate agus beidh sí lánsásta cabhrú leat.

We would ask that these be paid by the end of September. Details are on the booklist. Payments can be made via Aladdin. A payment request will be sent this week. If you do not have the app visit the payments page on the website and follow the link. If you are experiencing financial difficulties, please contact the office to arrange a payment plan. If you are having difficulties with Aladdin, contact Kate and she will be happy to help you.

Alléirgeachtaí/ Allergies

Ba mhaith linn meabhrú daoibh go bhfuil an-chuid páistí sa scoil le hailléirgeacha, go háirithe do chnónna. Mar sin, iarraimis oraibh gan aon chnónna a chur sa lón. Mile buíochas as ucht bhur dtacaíocht leis seo.

We would like to remind you all that there are several children in the school with life threatening nut allergies and as a result, nuts and all nut products are banned from school, this includes pesto etc. Therefore, we would ask that nuts are not included in lunches. We thank you for your cooperation with this.

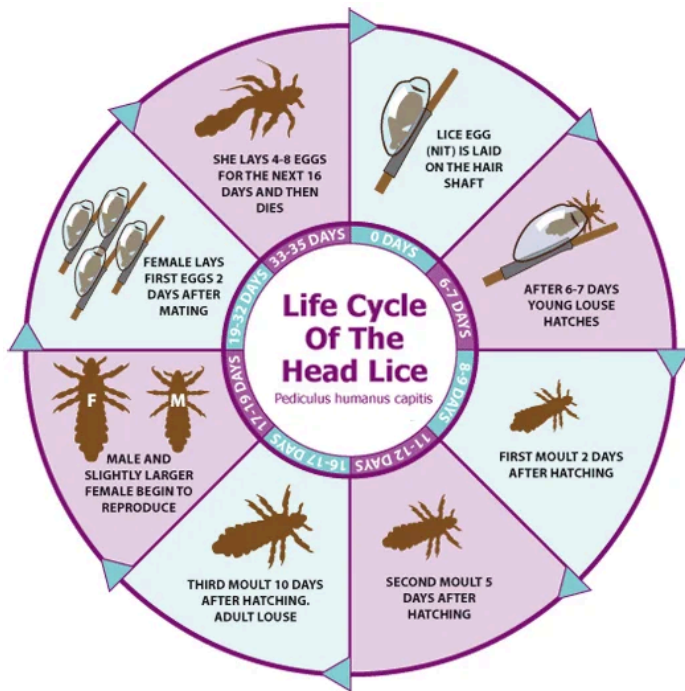
Cóisir, Cártaí, Cuireadh/ Parties, Invites, Cards.

Ba mhaith linn meabhrú daoibh nach bhfuil aon chead cuireadh/cártaí a thabhairt amach ar scoil. Níl aon chead ag aon duine cácaí/milseáin nó eile a thabhairt isteach ach oiread. Cuirfear abhaile iad má thagann tú leo. Tá an rogha agat bheith ar an liosta teagmhála do thuismitheoirí ar Aladdin.

*We would like to remind you that party invitations/cards are not allowed to be given out at school or in the lines. Birthday cakes/sweets etc are not allowed at school. **Please do not arrive with cakes as the teacher will have to turn them away.** You can join the class list on Aladdin if you so wish other parents to see your contact details.*

Meabhrúchán: Má tá aon rud le fágáil isteach agat i rith an lae lón srl, caithfear é a fhágáil ar an seif i bhfálitiú na scoile le lipéad air.

Reminder: *If at any stage you need to leave anything into your son/ daughter during the school day ie. lunch, it should be left on the shelf in the foyer with a label on it.*



Míolta Ghruaige/ Head Lice

Is fadhb í seo i ngach pobal scoile. De bharr sin, tá polasaí mhíolta ghruaige ag an scoil. Tá cóip de ar fáil anseo. [Rialacha & Polasaithe na Scoile | gsb](#). Feicfidh sibh sa pholasaí go bhfuil ar aon phásite le gruaig fhada í a cheangailt siar ar scoil. Tá sé seo mar an gcéanna do bhuachaillí & do chailíní.

This is a problem in every school community. For this reason, we have a head lice policy. A copy of which can be found here. [Rules & Policies | gsb](#). You will see in the policy that all pupils with long hair have to tie it back while in school. This applies for both boys & girls. drive

Club na Naíonán

Beidh Club na Naíonán ag tosú dé Luain an 08/09. Beidh sé ar siúl gach lá ó 1:30 go dtí 2:30 do phaistí na Naíonán Beag agus Mór. Tá costais €5 an lá ar agus bíonn sé le híoc ar Aladdin. Beidh an bille le híoc ar Aladdin ríomh an mbriseadh lár tearma. Má tá súim agat do pháiste a chlárú is feidir libh ríomhphoist a sheoladh chuig oifig@gsbhailebrigin.ie le hainm agus rang do pháiste agus na leathanta a mbeidh siad ag an gclub.

Club na Naíonán will start on Monday the 08/09. It will be on from 1:30-2:30 in the P.E hall or yard for students in Junior and Senior infants. It costs €5 per day and it is to be paid through Aladdin. Each bill must be paid for before the midterm break. Please email oifig@gsbhailebrigin.ie with your child's name and class and what days you would like them to attend.

Foirm Leighis/Medicine forms.

Má tá do pháiste ag glacadh aon leighis go mbeidh nó go bhféadfaí go mbeadh gá go nglacfaí leis le linn an lae scoile, (analóir, epipen srl.) tá foirm leighis le líonadh agaibh. Fiú má tá ceann ó anuraidh tá ceann nua le líon gach bhliain. Má tá ceann de ghíth uait is feidir ríomhphoist a chuir chuig an oifig agus beidh muid in an é a seoladh chugat.

If your child has any medications that they take and that may need to be taken within school hours, such as inhalers, epipens or antihistamines you will need to fill out a medical form. Even if you had one from last year a new one is required for every year. Please email the office for a copy of this form.

Corpoideachas/P.E

Thíos tá an líosta de leathanta a bhfuil ag gach rang do chorpoideachas. Is féidir leis na daltaí a gcuid éadaí reatha a chaitheamh an lá sin.

Please find below your child's PE day. They can wear their tracksuit on that day.

Naíonáin Bheaga Maria- Luain/Monday

Naíonáin Bheaga Abby- Luain/Monday

Naíonáin Mhóra Gráinne/Laura- Aoine/Friday

Rang a 1 Róisín- Máirt/Tuesday

Rang a 2 Caoimhe- Luain/Monday

Rang a 2 Gráinne- Máirt/Tuesday

Rang a 3 Aoibheann- Déardaoin/Thursday

Rang a 3 Carley- Luain/Monday

Rang a 4 Tom- Céadaoin/Wednesday

Rang a 4 Emma-Máirt/Tuesday

Rang a 5 Jack- Déardaoin/Thursday

Rang a 5 Tomás- Déardaoin/Thursday

Rang a 6 Aisling- Máirt/Tuesday

Rang a 6 Seán- Déardaoin/Thursday

An Cuan Sinéad- Máirt/Tuesday

An Cuan Molly- Déardaoin/Thursday

HSE Immunisation Forms do Naíonáin Bheaga

Inné bhí foirmacha agus pac eolais seolta abhaile leis na páistí sna Naíonáin Bheaga faoi na HSE Immunisations a bheidh ar siúl sa scoil ar an 23/10/2025. Tá na foirmeacha seo le líonadh agus le tabhairt ar ais chuig an scoil roimh an 08/09. Fiú muna mbeidh do pháiste ag glacadh leis na hinsteallaithe,tá ort an form a líonadh agus rá nach bhfuil tú ag iarraidh go gheobhaidh do phaiste iad. Má tá aon cheist agat tá sonraí teagmhail don HSE ar an foirm nó is feidir libh teacht i dteagmhail linn.

All of the children in Junior Infants went home with an information pack and forms for the HSE Immunisation that will be rolled out in school on the 23/10/2025. These forms are to be filled out and returned to the school before 08/09. Even if your child will not be getting the in school Immunisations you will still need to fill out the form to say you don't give permission. If you have any questions there is contact information for the HSE on the forms or you can email the office.

Má tá aon cheist agaibh faoi rud ar bith sa nuachtlitir is feidir libh ríomhphoist a sheoladh chuig oifig@gsbhailebrigin.ie

If you have any questions about anything in the nuachtlitir please email oifig@gsbhailebrigin.ie