



gaelscoil bhaile brigín

NUACHTLITIR

30/08/23

Fáilte ar ais ar scoil.

Ba mhaith liom ar dtús fáilte Uí Cheallaigh a chur roimh gach duine ar ais ar scoil. Bhíomar ar bís na

daltaí ar fad a fheiceáil arís théis an tsamhraidh!

Ba mhaith linn a mheabhrú freisin nár cheart do thuismitheoirí Rang 3-6 bheith ag bailiú timpeall na clóis ar maidin.

Meabhraimid arís nár cheart d'éinne bheith ar thalamh na scoile roimh 8.45. Ciallaíonn sé seo, **nach féidir bheith ag páirceáil ar thalamh na scoile roimh 8.45 chomh maith. Níl cead páirceáil ar an áit 'set down' ar thaobh na scoile ar chor ar bith, taobh Bracken san áireamh.** Tá trí scoil ar an gcampas agus caithfidimid meas a thabhairt ar na scoileanna eile chomh maith. Tá easpa áiteanna páirceála ar shuíomh na scoile, mar sin molaimid daoibh páirceáil i gcarrchlós an tséipéil agus siúl suas.



Meabhrú freisin cloí le rialacha an bhóthair agus gan páirceáil ar na línte buí dúbailte taobh amuigh de gheataí na scoile.

I would like to take this opportunity to welcome everyone back to school. We were delighted to see our wonderful students coming back to school after the summer break.

We would ask parents to exit the school campus by walking down the walkway between Wavin and the basketball yards.

*Parents are not to come onto the campus. No one is to be on the school grounds before 8.45. **This means that there is no parking on the school campus before 8.45 either. There is no parking allowed in the set down area on the school side at any time. This includes outside Gaelscoil Bhaile Brigín, Bracken Educate Together & in between.** There are 3 schools on the campus and we need to be aware of this and respect the start times of the other schools too. Please ensure that your child is not on the school grounds before then. There is very little parking on the school campus, therefore, we would encourage you to park in the church car park and walk to the school.*

Reminder also to adhere to the rules of the road and not to park on the double yellow lines outside the school gates.

Córas Dhul Abhaile/Collection times

Tá iartha ag Bracken ET le cur i gcuimhne go mbeidh a gcuid daltaí ag fágáil na scoile suas go dtí 2.10 gach lá, mar sin, iarraidimid oraibh gan a bheith ar thalamh na scoile roimh 2.15 má tá tú ag bailiú ó ranganna 1-6.

Rachaidh daltaí rang a 3 & Rang a 4 amach tríd geata an chlarrchlóis foirne. Scaoilfear le daltaí Rang a 5 & Rang a 6 ó phríomhghheata na scoile (in aice le Bracken Educate Together). Is socrú sealadhach é seo ags déanfaidh muid athbheithniú air de réir a chéile.

Iarraimid ar dhaoine gan seasamh ar an talamh ós chomhair na barriers. Má sheasann tuistí siar, siúlfar amach ar an gcosán an rang agus scaoilfear ó sin iad. Beidh carranna fhoireann Bracken ET ag fágáil na scoile ó 2.10 ar aghaidh. Iarraimid freisin ar dhaoine gan siúl faoin barrier.

Bracken ET have asked to remind our parent body that their students will be collected until 2.10 everyday so anyone who is collecting from 2.20 please do not come onto campus until 2.15.

3rd & 4th class pupils will go home from the staff carpark gate. 5th & 6th class pupils will exit from the main school gate (beside Bracken Educate Together) This is a temporary measure and will be reviewed as works are completed.

4th & 5th class will come out the gate at the barriers and walk to the right. Please ensure that you do not block the barriers as staff from Bracken ET will begin leaving from 2.10 on. 4th class will be walked out to the footpath on the left (as you look at the barriers) so if you are picking up a child from 4th, please wait on that side. Please wait back a bit. 6th class will come out from the pedestrian gate after 3rd and 5th class will come out after 4th class. We would strongly encourage children from 5th&6th to be collected from church car park. It will take us all a few days to get used to the system again. Thank you for your patience.

Dóibh siúd atá ag tiomáint isteach ar an gcampas ar maidin, ba mhaith liom a mheabhú nach bhfuil AON áit pháirceála ar fáil. Tá an carrchlós ann d'fhoirní na 3 scoileanna agus is "set-down" amháin atá sna háiteanna eile. Ní féidir bheith thuas taobh amuigh roimh **8.40 ar a luaithe. Tá 3 scoil ag feidhmniú as an gceantar sin ar maidin agus caithfidh muid ar fad comhoibriú lena chéile chun gur féidir leis an gcampas feidhmniú. Tá amanna ar leith leagtha amach don 3 scoil - tá tuismitheoirí Bracken ET ag baint úsáide as suas go dtí théis 8.30 ansin, is féidir linn tosú ag teacht isteach théis é sin. Níl sé cothrom ar na scoileanna eile má tá na háiteanna "set-down" tógtha mar áit pháirceála ag an nGaelscoil. Tá dualgas ar an 3 scoil a bheith ag comhoibriú i leith seo.**

For those who are dropping children to the school doors and are driving into the campus, I would like to remind everyone that there are NO parking places available. The carpark is used by the staff of the 3 schools. The rest of the places are "set-down only". No one from the Gaelscoil is to enter the campus before 8.40 (in car, on foot before 8.45). 3 schools are operating in a very small area every morning and we must all cooperate in order to ensure the smooth operation of the campus. Each school has been allocated times - parents and guardians of children in Bracken ET will be using the set down area until after 8.30. The Gaelscoil can use it from 8.40 on. It is not fair on the other schools if the set-down area is in use as parking spaces by the Gaelscoil. It is creating a bottle neck with people letting small children out in the middle of the road. Each school has a duty to ensure that we are all adhering to the agreed arrangements. We appreciate your ongoing support in this matter.

Sonraí Teagmhála/ Contact Details

Má tá aon athrú ar shonraí teagmhála tá sé rí-thábhachtach an scoil a chur ar an eolas faoi. I gcás práinne caithfidh bheith in ann dul i dteagmháil libh. Is féidir leat é seo a dhéanamh ar Aladdin. **Tabhair faoi deara nach féidir le tuismitheoirí ach amháin a gcuid eolais féin & sonraí loco parentis a fheiceáil.** Mar shampla ní féidir le Mam eolas Daid a fheiceáil agus a mhalairt. Seo de bharr chúrsaí príobháideachais. Tá an t-eolas ar an gcóras agus is féidir linn é a fheiceáil. Mar sin, iarraimis oraibh gan tuismitheoir a chur mar teagmhálaí éigeandála.

If there is any change in your contact details it is of the utmost importance that you inform the school. Contact details are needed in case of emergencies. This can now be done on Aladdin. Please note that parents can only see their own information & the information of the loco parentis. For example, Mam cannot see Dad's information and vice versa. This is due to privacy. The information for both parents is on the system, however and can be seen by us. Therefore, we would ask that you do not change the emergency contact details to include another parent.



Lóin Folláin/ Healthy Lunches

Ba mhaith linn cur i gcuimhne de ghach tuismitheoir faoi pholasaí na scoile maidir leis an lón. Tá cóip de ar shuíomh na scoile & sampla thíos. Tá leabhrán eolais faoi chonas lón folláin a ullmhú ceangailte leis an nuachtlitr chomh maith.

We would like to remind all parents of our healthy eating policy. A copy is available on the school website & a section is below. A leaflet on how to prepare healthy lunches is also attached with this newsletter.

Food which can be part of lunch:

All healthy foods are encouraged for lunch e.g. sandwiches, fruit, yoghurts, crackers (tuc crackers are allowed), vegetables etc.

Popcorn is allowed, home baking is allowed e.g. scones/fruit scones/breads/ flapjacks (without chocolate), - however no desserts e.g. cakes/pies/tarts etc.

Drinks: milk/water/fruit juices

Not allowed:

There is a ban on any chocolate product – this includes chocolate milks, yoghurts, spreads, cereal bars with chocolate etc.

All sweets are not allowed – including fruit winders. No biscuits are allowed – this is to include digestives, rich tea etc.

Cereal bars are not allowed, No crisps are allowed.

Drinks: fizzy drinks and prime/monster/powerade/lucazade drinks are not allowed.



Cúrsaí Poncúlachta/Tinrimh/Attendance and Punctuality:

Ba mhaith liom a chur i gcuimhne do gach duine go bhfuil dualgas reathúil ar pháistí freastal ar scoil. Níor choir páistí a choinneáil sa bhaile ón scoil ach amháin má tá siad tinn. Sa chás go bhfuil do pháiste tinn, is gá scéal a chur chuig an scoil, trí ghlaoch ar scoil, rphost a chur chuig an múinteoir nó nóta a chur ar Aladdin nó litir ag tabhairt cúis na hasláithreachta. Tá dualgas ar an scoil tuairisciú chuig TUSLA nuair a chailleann aon pháiste níos mó ná 20 lá. Bíonn míniú le tabhairt chucu chomh maith ar chúiseanna na n-asláithreachtaí. Tá sé tábhachtach chomh maith go mbíonn do pháiste ar scoil in am.

Tosaíonn an scoil ag 8.50 ar maidin. Ba chóir go mbeadh do pháiste sa líne ag an am sin (**NB NÍ FÉIDIR LE PÁISTÍ A BHEITH AR SHUÍOMH NA SCOILE ROIMH 8.45**). Má bhíonn páistí déanach ar bhonn leanúnach msh ag teacht isteach ag 9.10 gach maidin sin beagnach 2 uair a chloig de scolaíocht caillte acu gach seachtain. Ar maidin, clúdaítear go leor gnéithe tábhachtacha ó litearthacht, ceartú an obair bhaile, spraoi struchtúrtha agus go leor eile. Chomh maith leis sin, tá sé tábhachtach go dtuigeann páistí an tábhacht le poncúlacht don todhchaí, is deis é seo dóibh anois dea-nósanna a chothú a sheasfaidh dóibh don chuid eile dá saoil.

I would like to remind everyone that there is a legal responsibility to ensure that children attend school regularly. Children should only be kept at home if they are sick but should return when they are better. If your child is sick and is unable to attend school, you must inform the school by phone and by letter/ e-mail. Please ensure that there is a reason given for the absence. The school has a legal obligation to inform TUSLA- Child and Family Agency when a child misses more than 20 days school. We also have to provide an explanation for those absences.

*It is also extremely important to ensure that your child is on time for school. School begins at 8.50am. Your child should be in his/her line at that time. (**NB NOBODY IS ALLOWED ON SCHOOL PREMISES BEFORE 8.45 – THEY WILL NOT BE COVERED BY INSURANCE**). If a child is late regularly, eg arrives at 9.10, that would mean that he/she has missed nearly 2 hours of school a week. Lots of important areas of the curriculum are covered in the morning, ranging from literacy, to structured play to correction of homework. Punctuality is also an important life skill which your child will need to learn for the future. This is an opportunity to instil this skill in them from an early age. If your child is late, he/she must sign in in the office and if you are collecting your child early you must sign them out at the office. No parent may go further than reception. Please notify via Aladdin in advance of arriving.*

Rothair srl/ Bikes etc

Tabhair faoi deara nach bhfuil cead ag aon duine rothair, scútar nó bugaithe a fhágáil lastigh den scoil. Tá áit ann taobh amuigh do na rothair & scútar. Is gá duit iad a chur faoi glas anseo.

Please note that bikes, scooters, buggies etc cannot be left inside the school for the day. There is a designated bike rack outside for these items. Please ensure that you lock your belongings as the school cannot be held responsible for any items stolen.

Billí Scoile/ School Bills

D' iarrfaimis oraibh iad seo a íoc roimh dheireadh mhí Mheán Fómhair. Tá na sonraí ar na leabharliostaí. Is féidir íocaíochtaí a dhéanamh ar Aladdin amháin. Rachaidh iarratas abhaile an tseachtain seo. Mura bhfuil fáil agat ar an aip, is féidir dul chuig suíomh idirlín na scoile agus íoc anseo. Mura féidir leat íoc faoi láthair de bharr chúrsaí airgeadais, déan teagmháil linn le socrú eile a dhéanamh. Má tá deacrachtaí agat le Aladdin, cuir scéal chuig Aisling agus beidh sí lánsásta cabhrú leat.

We would ask that these be paid by the end of September. Details are on the booklist. Payments can be made via Aladdin. A payment request will be sent this week. If you do not have the app visit the payments page on the website and follow the link. If you are experiencing financial difficulties, please contact the office to arrange a payment plan. If you are having difficulties with Aladdin, contact Aisling and she will be happy to help you.

Leigheas/ Medication

Má tá leigheas le fáil ag do pháiste ar scoil is gá duit cead a fháil ón mBord. Tá foirm ceangailte leis an bpolasaí dháileadh leighis atá ar fáil ar an suíomh idirlíne. Tá sé seo le déanamh gach bliain. Déan cinnte go bhfuil na foirmeacha ar ais roimh dheireadh na seachtaine seo chugainn. Má tá epi-pen de dhíth ar do pháiste, tá an dualgas ar an tuismitheoir an scoil a chur ar an eolas faoi agus na epi-pens a chur ar fáil le sonraí do pháistí orthu. Ba chóir duit freisin 2 cóip den phlean ailléirgeacha le grianghraf a sheoladh chun na scoile. D' iarrfaimis oraibh é seo a dhéanamh láithreach.

If your child needs to have any medicine in school (inhalers included), you must have permission from the Board of Management. The form is attached to the administration of medication policy, which is available on the school website, you can also request a hard copy from the office. This must be done each school year. Please ensure that all forms are returned by the end of next week. If your child requires an epi-pen, it is your responsibility to ensure that the school is made aware of this and for epi-pens to be provided with your child's details on it. You should also send 2 copies of an allergy action plan with your child's picture on it to the school. This should be done immediately.

Alléirgeachtaí/ Allergies

Ba mhaith linn meabhrú daoibh go bhfuil an-chuid páistí sa scoil le hailléirgeacha, go háirithe do chnónna. Mar sin, iarraimis oraibh gan aon chnónna a chur sa lón. Mile buíochas as ucht bhur dtacaíocht leis seo.

We would like to remind you all that there are several children in the school with life threatening nut allergies and as a result, nuts and all nut products are banned from school, this includes pesto etc. Therefore, we would ask that nuts are not included in lunches. We thank you for your cooperation with this.

Cóisir, Cártaí, Cuireadh/ Parties, Invites, Cards.

Ba mhaith linn meabhrú daoibh nach bhfuil aon chead cuireadh/cártaí a thabhairt amach ar scoil. Níl aon chead ag aon duine cácaí/milseáin nó eile a thabhairt isteach ach oiread. Cuirfear abhaile iad má thagann tú leo. Tá an rogha agat bheith ar an liosta teagmhála do thuismitheoirí ar Aladdin.

*We would like to remind you that party invitations/cards are not allowed to be given out at school or in the lines. Birthday cakes/sweets etc are not allowed at school. **Please do not arrive with cakes as the teacher will have to turn them away.** You can join the class list on Aladdin if you so wish other parents to see your contact details.*

Meabhrúchán: Má tá aon rud le fágáil isteach agat i rith an lae lón srl, caithfear é a fhágáil ar an seif i bhfáiltiú na scoile le lipéad air.

Reminder: *If at any stage you need to leave anything into your son/ daughter during the school day ie. lunch, it should be left on the shelf in the foyer with a label on it.*

Féilire Scoile/ School Calendar

Tá an féilire scoile ar fáil ar an suíomh idirlíne. Tagann na dátaí aníos ar Aladdin chomh maith. *The calendar is available on the website. These dates also show on Aladdin.*

Club na Naíonán/ Infant Club

Tá an club seo ar siúl ó 1.30-2.30 gach lá sa halla nó sa clós ag braith ar an aimsir. Ní bheidh ach méid áirithe spásanna ar fáil gach lá. Beidh ort clárú roimhré le do pháiste a sheoladh ann. Ní chóir go mbeadh aon athrú le linn an leath téarma ar laethanta. Os rud é nach mbeimid ag glacadh ach le méid áirithe páiste, beidh ort íoc as aon laethanta atá do pháiste cláraithe lena haghaidh. Tá costas €20 don tseachtain ar an gclub nó €4 in aghaidh an lae. Cuirfear an bille don leath téarma suas ar Aladdin roimh dheireadh mhí Mheán Fómhair. Is féidir é seo a íoc píosa ar pháosa ach tá sé le bheith glanta faoin mbriseadh mheán téarma. Tabharfar tús áite dóibh siúd a thagann i dteagmháil chun tosach. Má thagann aon laethanta ar fáil ag aon phointe, cuirfear scéal amach ar Aladdin. Beidh an Club taobh amuigh má tá an aimsir go deas nó sa halla má tá sé ag cur báistí. Tosóidh an club ar an 11 Meán Fómhair. Ní rachaidh sé ar aghaidh mura bhfuil líon áirithe daltaí cláraithe de. Braitheann sé freisin ar chúrsaí fostaíochta.

This club runs from 1.30-2.30 in the hall. There are only a limited number of places available each day. You will need to register your child in advance for the club. There will be no change to days mid-term. As we are only allocating a small number of places per class, any days that your child is registered for must be paid for, regardless of whether he/she attends. The club costs €20 per week or €4 per day. The bill for the half term will be added to Aladdin by the end of September. This can be paid in installments of €5 or more but should be paid in full before mid-term break. Places will be allocated on a first come first serve basis. If places become available for certain days at any stage, a message will be sent via Aladdin. The club will be outdoors when the weather allows and in the hall if it is raining. Club will start on 11th September. The club will only run if there are sufficient numbers and staffing available.



Laethanta Corpoideachais/PE days

Thíos faoi, gheobhaidh tú lá chorp oideachais do pháiste.

Please find below the allocated day for PE for your child.

Dé Luain/Monday:

9.00-9.45 NB Elaine (Junior Infants)

9.45-10.30 - NM Doireann/Helena (Senior Infants)

10.55-11.40 - Rang 1 Maria

11.40-12.20 - Rang 2 Gráinne

12.45-1.30 - Rang 3 Gráinne

Dé Máirt/Tuesday:

9.00-9.45 Rang 4 - Lára

9.45-10.30 - Rang 5 Tom

10.55-11.40 - Rang 6 Cillín

11.40-12.20 - An Cuan Sóis (Neasa)

12.45-1.30 - An Cuan Sins (Róisín)

Déardaoin/Thursday:

9.00-9.45 NB Abby (Junior Infants)

9.45-10.30 - NM Gráinne Ní Ch (Senior Infants)

10.55-11.40 - Rang 1 Tomás

11.40-12.20 - Rang 2 Dearbhla

12.45-1.30 - Rang 3 Nicole

Dé hAoine/Friday:

10.55-11.40 Rang 4: Emma

11.40-12.20 - Rang 5 Sile

12.45-1.30 - Rang 6 Donagh

Ag fanacht istigh ag am lóin/ Staying in at lunch time.

Ní féidir le páistí fanacht istigh ag am lóin ach amháin sa chás go bhfuil a leithead de chos/lámh briste nó i gcás éigeandála eile (is gá don tuiste seo a phlé leis an múinteoir).

Pupils are not permitted to stay in at lunch time except in the case of a broken limb or other emergency situations (This will need to be discussed with the class teacher).

Aladdin

D'iarrfaimis oraibh d'uimhir a chinntiú ar an aip ionas go bhfaigheann sibh teachtaireacht ar an aip seachas an gnáth bhealach.

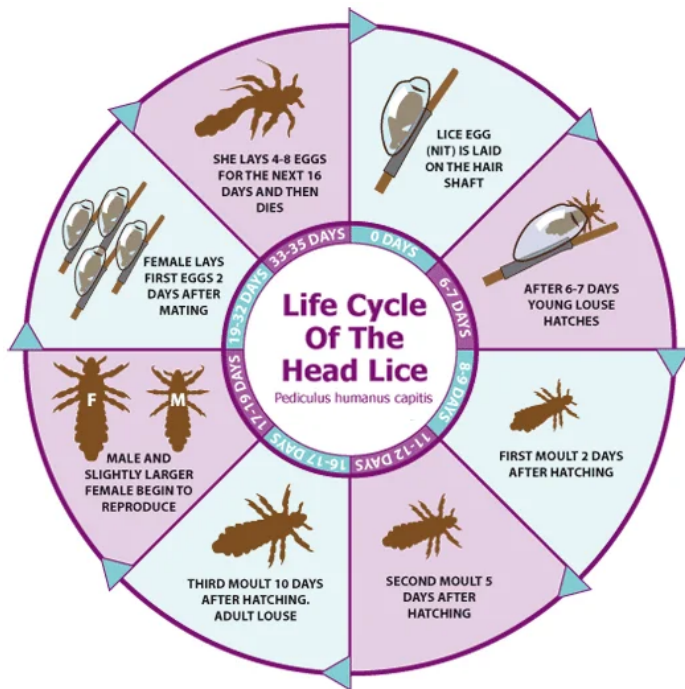
We would ask that all parents please verify their mobile number on the aladdin app. This will ensure that you will receive messages in the app rather than via text.

Fáilte/ Welcome

Ba mhaith linn fáilte is fiche a chur roimh na baill nua den fhoireann scoile. Múinteoirí Abby agus Tomás agus Nicole atá théis tosú linn go foirmeáilte ar an bhfoireann mhúinteoireachta. Táimid ag súil go mór le bheith ag obair leo i mbliana agus sna blianta amach anseo. Fáilte freisin roimh Gillian ár CRS nua.

We would like to warmly welcome our new members of staff. Múinteoirí Abby and Tomás. We look forward to working with them this year & in future years. Welcome also to Gillian our new SNA.

Míolta Ghruaige/ Head Lice



Is fadhb í seo i ngach pobal scoile. De bharr sin, tá polasaí mhíolta ghruaige ag an scoil. Tá cóip de ar fáil anseo. [Rialacha & Polasaithe na Scoile | gsbb](#). Feicfidh sibh sa pholasaí go bhfuil ar aon phásite le gruaig fhada í a cheangailt siar ar scoil. Tá sé seo mar an gcéanna do bhuachaillí & do chailíní.

This is a problem in every school community. For this reason, we have a head lice policy. A copy of which can be found here. [Rules & Policies | gsbb](#). You will see in the policy that all pupils with long hair have to tie it back while in school. This applies for both boys & girls.

The lunch bag

Ceangailte leis an nuachtlitir seo gheobhaidh sibh eolas faoi The Lunch Bag. Is comhlacht é seo a chuireann lón ar fáil do dhaltaí na scoile má tá sé de dhíth ort.

Attached to this newsletter, please find information from the Lunch Bag. This company provides lunch to pupils in the school if you wish to avail of it.



TABLE QUIZ

in aid of

Balbriggan Meals on Wheels

Thurs 14th September

Time: 8.00pm

Venue:

Senior Citizens Hall,
High Street, Balbriggan

TABLES OF 4; €10 per person

- ❖ Raffle
- ❖ Spot Prizes
- ❖ Refreshments

All Proceeds raised go to
Balbriggan Meals on Wheels